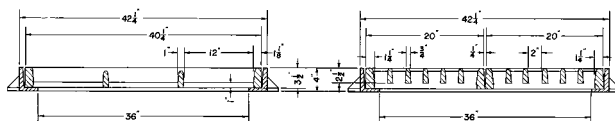


R-3807**Median Drain Frame, Double Grate**

Heavy Duty

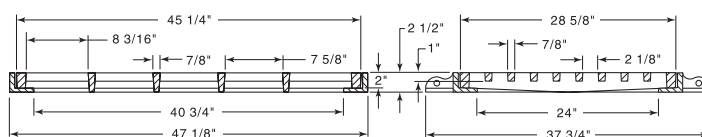


CATALOG NUMBER	GRATE TYPE	SQ. FT. OPEN	WEIR PERIMETER LINEAL FEET
R-3807	D	6.0	13.4

For flush-type inlet box in locations where median narrows. Recommended installation with load-bearing bars parallel to roadway.

R-3808-1**Median Drain Frame, Grate**

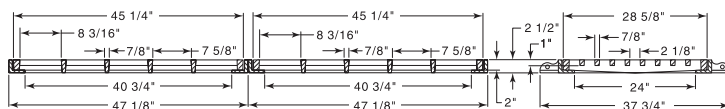
Heavy Duty



CATALOG NUMBER	GRATE TYPE	SQ. FT. OPEN	WEIR PERIMETER LINEAL FEET
R-3808-1	C	5.2	12.3

R-3808-2**Double Median Drain Frame, Grate**

Heavy Duty



CATALOG NUMBER	GRATE TYPE	SQ. FT. OPEN	WEIR PERIMETER LINEAL FEET
R-3808-2	C	10.3	19.9

Neenah Foundry has two pattern shops operating 24 hours a day. On any given day, the pattern shops are in the process of building between 15 and 20 new patterns. Using CNC machines, they construct metal, plastic and wood patterns for municipal castings. Everything from simple changes to existing patterns to completely new patterns are built to customer specifications every day.